

## **Spike XD-2 Plug & Play Driver Update for Windows XP**

**Note:** The XD-2 driver and software files available for download from the Mackie website are compressed. You will need to unzip the downloaded file.

If you haven't yet installed the XD-2 Plug and Play Drivers, skip to the "TO INSTALL THE XD-2 PLUG AND PLAY DRIVERS FOR WINDOWS XP" section of these instructions.

If you have already installed an older version of the XD-2 Plug and Play Drivers and are updating them to the current version, proceed through the "TO UPDATE THE XD-2 PLUG AND PLAY DRIVERS FOR WINDOWS XP" and stop when you get to the section entitled "TO INSTALL THE XD-2 PLUG AND PLAY DRIVERS FOR WINDOWS XP".

### **TO UPDATE THE XD-2 PLUG AND PLAY DRIVERS FOR WINDOWS XP**

**Step 1:** Click the appropriate link to download the .zip file for the XD-2 SoftApp Installer. If a dialog box opens asking if you would like to open or save the file, select **Save**. Then save the zip file to your computer's desktop.

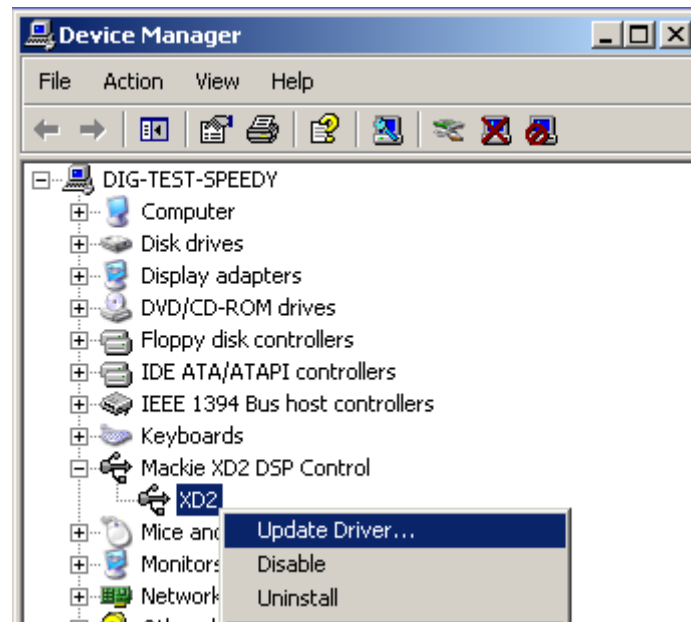
**Step 2:** When the download has completed, create a new folder on your computer's desktop and name it "XD2 Drivers".

**Step 3:** When the download has completed, double-click the zip file and extract its contents into the "XD2 Drivers" folder you created on the desktop of your computer. There should be 2 files in that folder when it has finished extracting.

**Step 4: Connect the XD-2 to its power supply** and plug the power supply into an appropriate wall outlet. (NOTE: The XD-2 does not receive its power through the USB connection.)

**Step 5: Connect the XD-2 to your Windows XP computer** with the USB cable that was included in your Spike package.

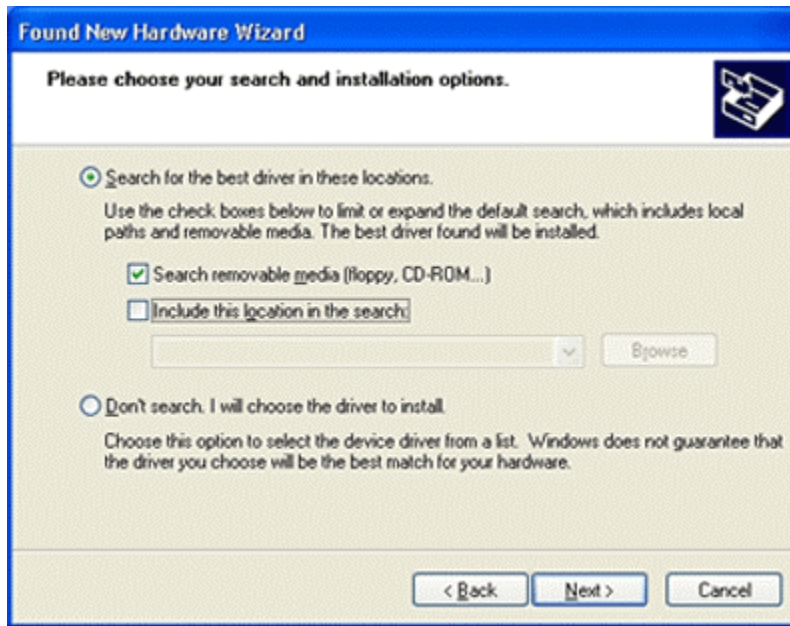
**Step 6:** Open the Windows XP **Device Manager** by double-clicking the System icon in your Windows XP Control Panels. Click on the **Hardware** tab, then click the **Device Manager** button. Look for **Mackie XD2 DSP Control** in the list of devices. Click the + sign to expand it, then right-click on **XD2** and select **Update Driver** from the pop-up menu.



**Step 7:** Windows will run the **Hardware Update Wizard**. Select **Install from a list or specific location** and click **Next**.



**Step 8: The Hardware Update Wizard will ask for the location of the driver.** Select **Include this location in the search** and deselect **Search removable media**. Then click the **Browse** button, browse to and select the driver file in the "XD-2 Drivers" folder on your desktop and click **Next**.



**Step 9: Windows will install the driver automatically.** Click the **Finish** button when the installation is complete.



## TO INSTALL THE XD-2 PLUG AND PLAY DRIVERS FOR WINDOWS XP

**Step 1:** Click the appropriate link to download the .zip file for the XD-2 SoftApp Installer. If a dialog box opens asking if you would like to open or save the file, select **Save**. Then save the zip file to your computer's desktop.

**Step 2:** When the download has completed, create a new folder on your computer's desktop and name it "XD2 Drivers".

**Step 3:** When the download has completed, double-click the zip file and extract its contents into the "XD2 Drivers" folder you created on the desktop of your computer. There should be 2 files in that folder when it has finished extracting.

**Step 4: Connect the XD-2 to its power supply** and plug the power supply into an appropriate wall outlet. (NOTE: The XD-2 does not receive its power through the USB connection.)

**Step 5: Connect the XD-2 to your Windows XP computer** with the USB cable that was included in your Spike package.

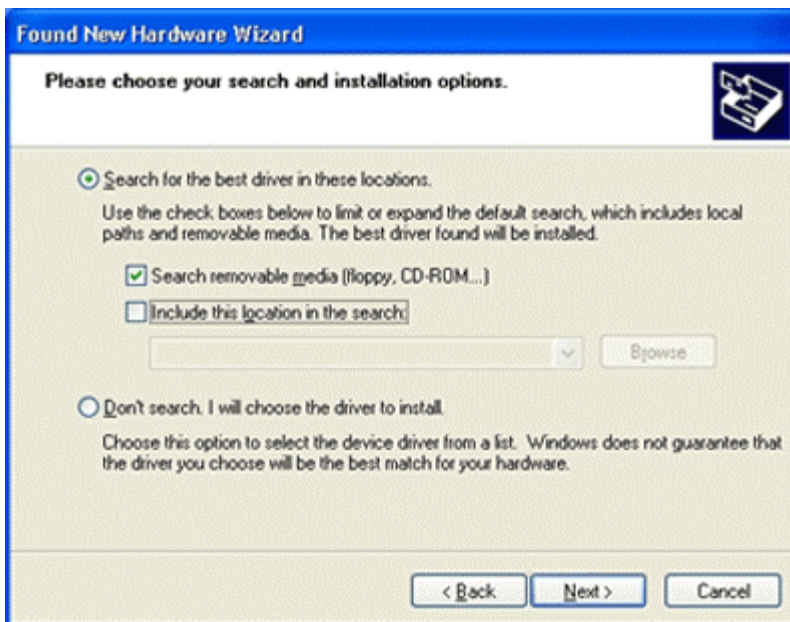
**Step 6:** Windows will auto-detect the XD-2 and you will see a **Found New Hardware** notice pop-up in your system tray.



**Step 7:** Windows will run the **Found New Hardware Wizard**. Select **Install from a list or specific location** and click **Next**.



**Step 8:** The **Found New Hardware Wizard** will ask for the location of the driver. Select **Include this location in the search** and deselect **Search removable media**. Then click the **Browse** button, browse to and select the driver file in the "XD-2 Drivers" folder on your desktop and click **Next**.



**Step 9: Windows will install the driver automatically.** Click the **Finish** button when the installation is complete.

