

## TT24 Expansion Card firmware upgrade instructions

The following instructions will help you upgrade the TT24 Expansion Card firmware file to the latest version.

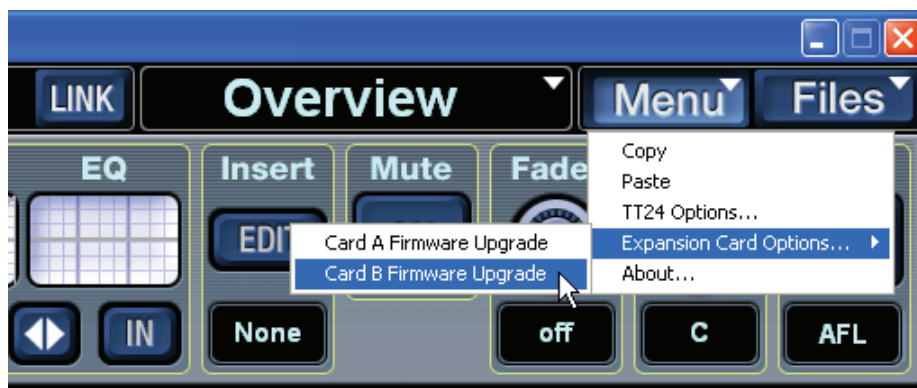
**IMPORTANT:** Make sure you have the latest version of firmware installed on your TT24 (press the HELP button to see the version and build number in the Touchscreen display) and the latest TT Control PC application on your computer (click Menu>About to see the version and build number onscreen). If you do not have the latest versions installed, the upgrade may fail or you may see the following warning when you open the TT Control application:



The latest versions can be downloaded from our website:  
[www.mackie.com/products/tt24](http://www.mackie.com/products/tt24)

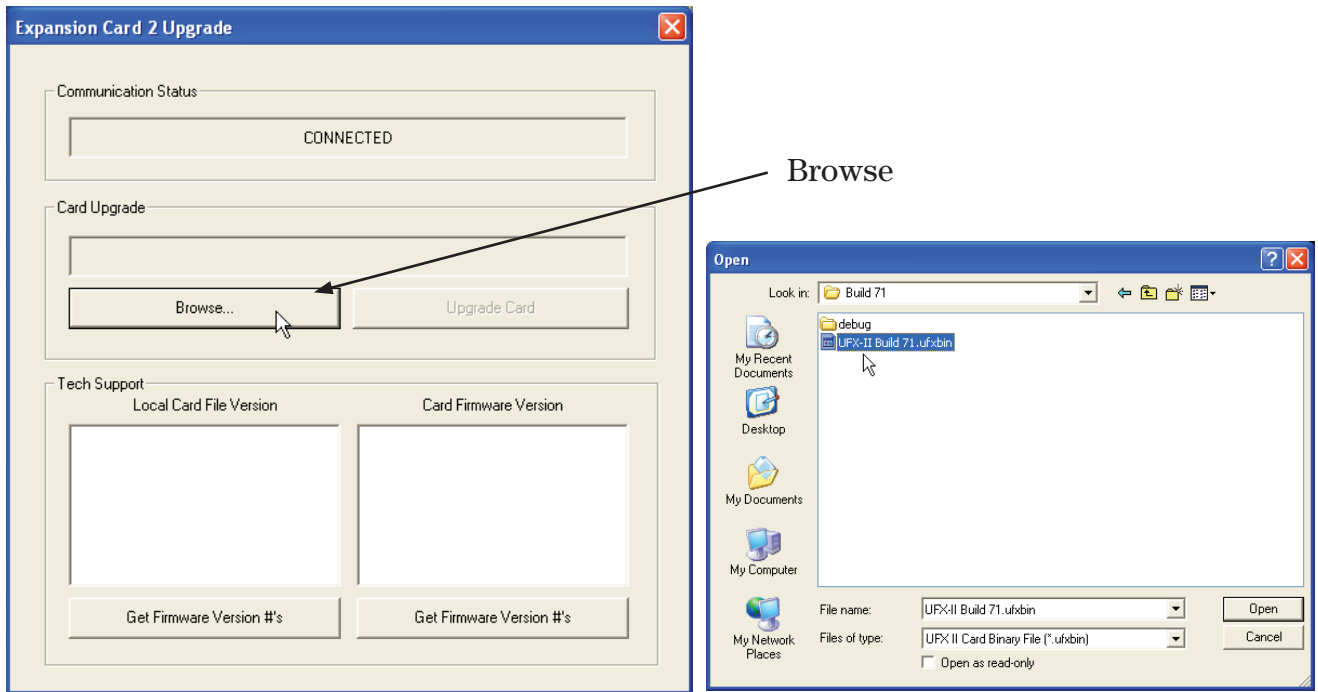
### Procedure

1. Download the latest version of the TT24 Expansion Card firmware for your particular expansion card from the Mackie website:  
[www.mackie.com/products/tt24/index.html#downloads](http://www.mackie.com/products/tt24/index.html#downloads)  
Filename: *Card\_Buildxx.cardbin*  
(italics are placeholders; e.g., UFX-II\_Build71.ufxbin)
2. With the TT24 turned on and the TT24 connected to the PC via USB, open the TT Control application on your computer and select “Menu” from the upper right of the GUI. From the list, select “Expansion Card Options > Card A/B Firmware Upgrade.” Select Card A or B, whichever card you are upgrading (Card A is the top slot and Card B is the bottom slot).

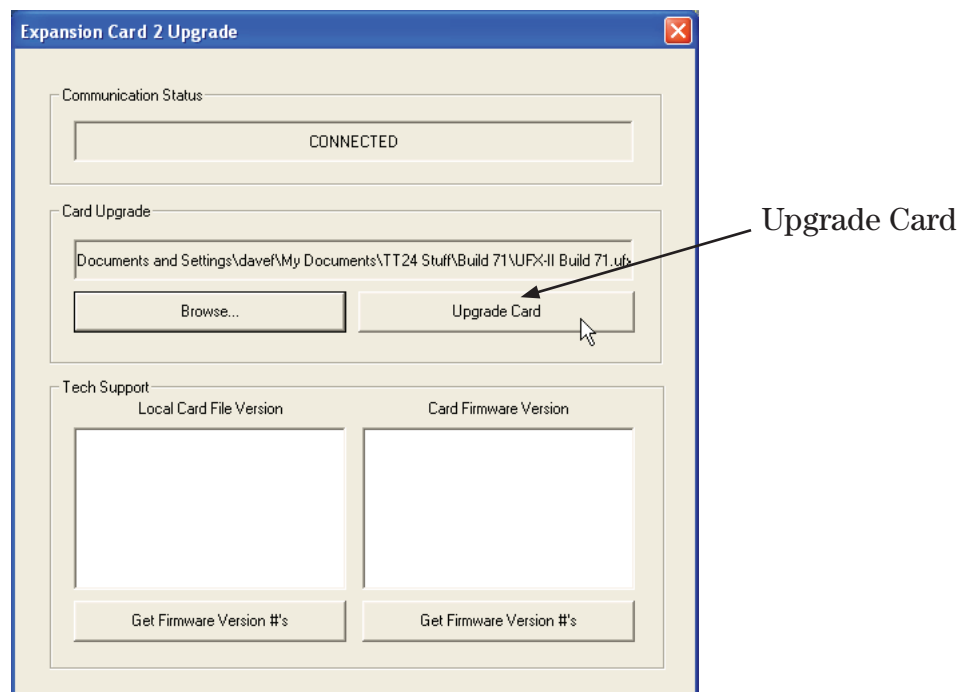


continued..

3. Select “Browse,” and locate the file you downloaded in step 1 (*Card\_Buildxxx.cardbin*). Click “Open” to select it.

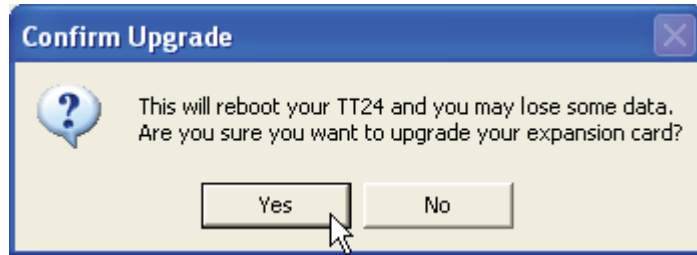


4. Double-check to make sure the filename in the “Card Upgrade” box is correct, and press the “Upgrade Card” button.

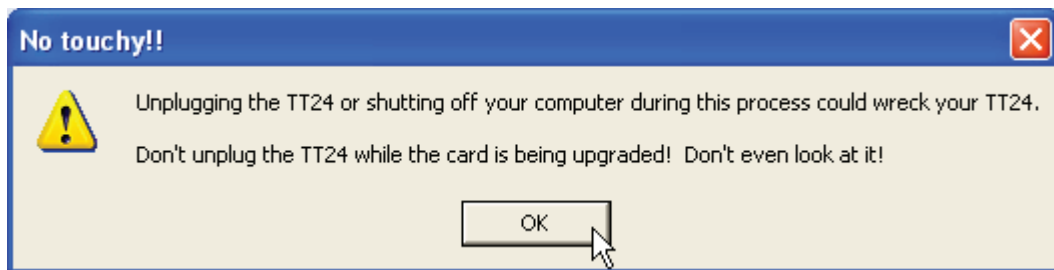


continued..

5. A dialog box opens asking you to confirm the upgrade, warning that this procedure will reboot your TT24. Click “Yes” to continue.



6. You will see a warning NOT to touch the TT24 while the card is being upgraded. Click “OK” to continue.



7. The upgrade procedure will continue. You will see a progress meter on the Touchscreen and on the computer display as the DSP 1 and DSP 2 Flash memories are rewritten. You should NOT touch the console until the procedure is done and the TT24 is rebooted.
8. After the procedure is completed and the TT24 reboots, close the Expansion Card Upgrade window and begin using the TT24 with its new and improved expansion card.