



Use these instructions to install the TT Control software application and Windows drivers on your computer (PC), to upgrade the TT24 firmware and TT Control software, to upgrade an attached DS3232 Digital Snake, and to upgrade the firmware for the TT24 expansion cards.

<b>Contents</b>	
TT Control Software and Drivers Installation Instructions .....	1
Installing the TT Control Driver (Windows 2000) .....	2
Installing the TT Control Driver (Windows XP) .....	6
Installing the TT Control Application (Win 2000/XP) .....	9
TT Control Software Upgrade Instructions .....	11
DS3232 Digital Snake Firmware Upgrade Instructions .....	12
TT24 Expansion Card Firmware Upgrade Instructions .....	15
TT24 Firmware Upgrade Instructions.....	18

## TT Control Software and Drivers Installation Instructions

- **Note:** The TT24 digital live console can be used straight out of the box, without the need for a computer.
- The console comes with a CD-ROM containing a copy of our TT Control software. This expands the control possibilities of the console, and allows you to control it with a computer. The software operation, details, and computer hookups are described in the quick-start guide and owner’s manual.
- The CD-ROM also includes a demo copy of Tracktion, located in the “Goodies” folder. This is our acclaimed and easy-to-use professional recording and MIDI production software application.
- The following instructions show how to install the drivers and the TT Control software.

### System Requirements for TT Control:

- Video monitor resolution 1024 x 768 or better
- Speed 600 MHz minimum
- 100 MB free disk space
- Windows 2000 or XP

## Installing the TT Control Drivers (Windows 2000)

1. Verify that your computer meets the system requirements, and place the CD in your computer's CD drive.
2. Connect the TT24 console to your computer with the included USB cable. Power on the console.
3. On your computer, a "Found New Hardware" dialog will appear for the TT24.



After a short delay, the "Found New Hardware" Wizard will run. Click Next.



4. Choose "Search for a suitable driver for my device," and click Next.



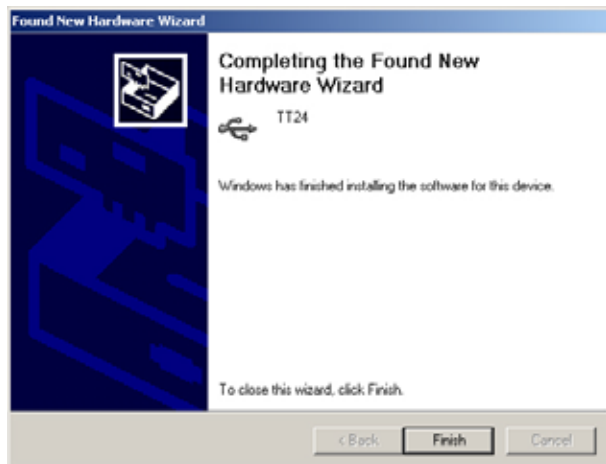
5. Check only “CD-ROM drives” and click Next.



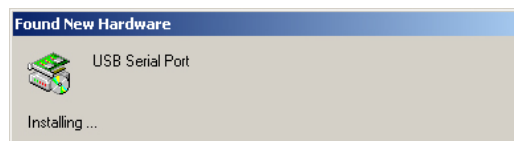
6. The TT24 drivers will be located automatically on the CD. Click Next.



7. The drivers will be installed and you will be prompted when the installation is successful. Click Finish.



8. A “Found New Hardware” dialog box will appear for the TT24 USB Serial Port.



After a short delay, as if by magic, the “Found New Hardware” Wizard will run. Click Next.



9. Choose “Search for a suitable driver for my device” and click Next.



10. Check only “CD-ROM drives” and click Next.



11. The TT24 USB serial port drivers will be located automatically on the CD. Click Next.



12. The drivers will be installed, and all being well, you will be prompted that installation was successful. Click Finish.

Now it's time to install the TT Control application, so skip to page 9.



13. (Optional) Press the new driver in place, taking care not to damage your nails in the process.



*Driver reconing*

## Installing the TT Control Drivers (Windows XP)

1. Verify that your computer meets the system requirements below, and place the CD in your computer's CD drive.
2. Connect the TT24 console to your computer with the included USB cable. Power on the console.
3. A "Found New Hardware" dialog will appear for the TT24.

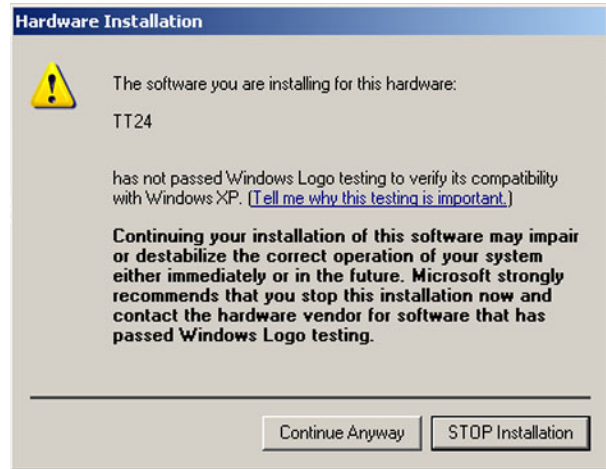
Soon, the "Found New Hardware" Wizard will run. Select "Install from a list or specific location," and click Next.



4. Choose "Search for the best driver in these locations," and check only the "Search removable media" check box. Click Next.



5. The TT24 drivers will be located automatically on the CD. If you are warned that the software has not passed the Windows Logo Testing, click Continue Anyway.



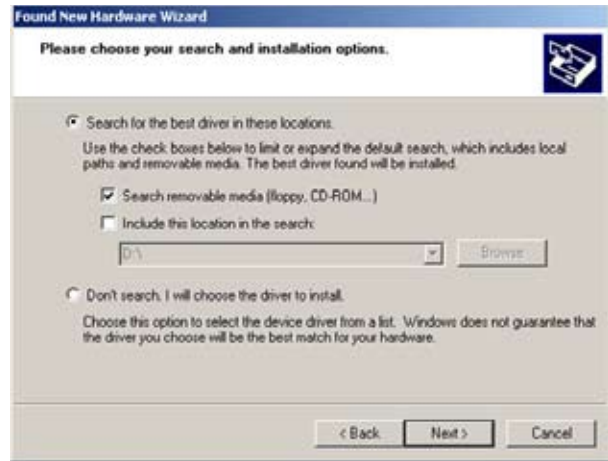
6. The drivers will be installed and you will be prompted that installation was successful. Click Finish.



7. Another Found New Hardware Wizard will run. Select "Install from a list or specific location" and click Next.



- Choose “Search for the best driver in these locations,” and check only the “Search removable media” check box. Click Next.



- The TT24 drivers will be located automatically on the CD. If you are warned that the software has not passed the Windows Logo Testing, click Continue Anyway.



- The drivers will be installed and you will be prompted that the installation was successful. Click Finish.

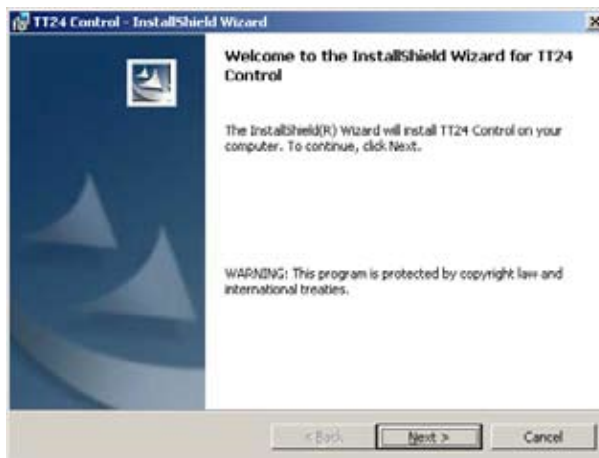
Now it's time to install the TT Control application, as shown on the next page.



## Installing the TT Control Application (Windows 2000 and Windows XP)

**Note:** Check the Mackie website prior to installing the TT Control application from the CD to see if there is a newer version available for download. If so, download the newer version and skip to page 11, “TT24 Firmware and TT Control Software Upgrade Instructions.”

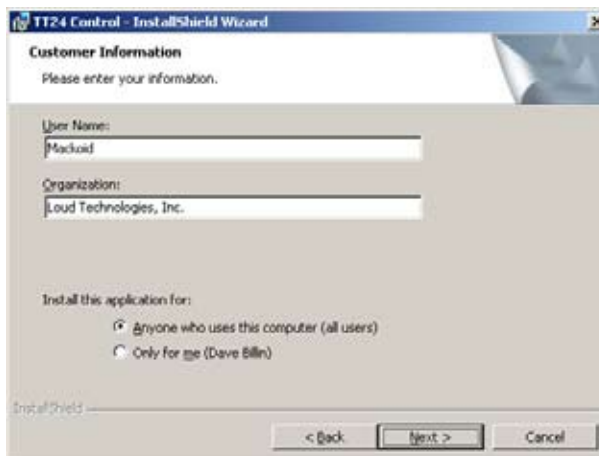
1. Launch: Your CD/DVD Drive\att control\setup.exe
2. The installer will launch and will eventually display this window (Windows 2000 shown). Click Next.



3. Read and accept the license agreement (if you agree the agreement is agreeable). Then click Next.



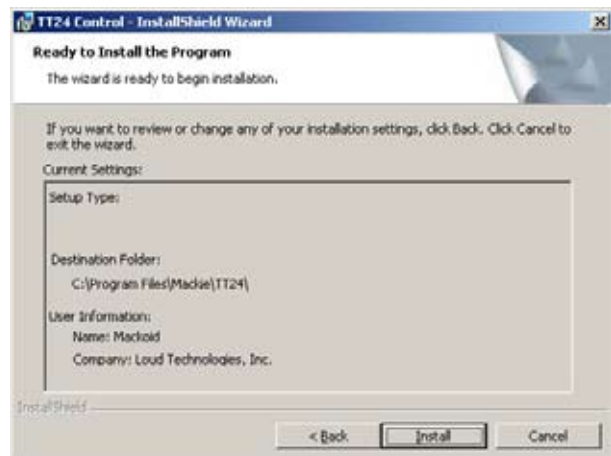
4. Enter your name, organization and shoe size. Choose who you would like to be able to use the application, and click Next.



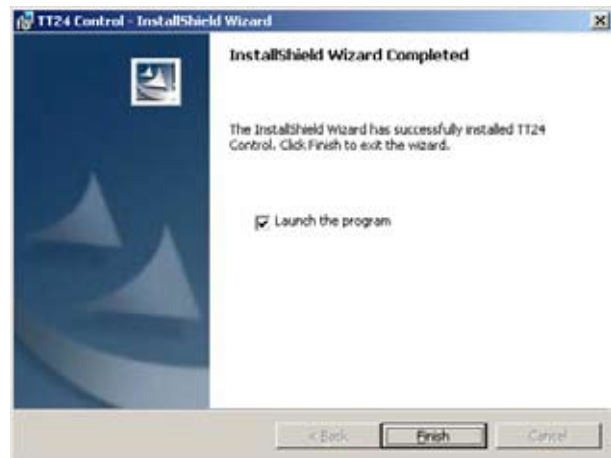
- Choose the installation folder; we recommend using the default location. Click Next.



- Verify the installation settings and click Install when ready.



- The installation will proceed. Click Finish to quit the installer and launch TT Control.



- The TT Control application will launch and can now be used with your TT24 console. Check out the owner's manual and quick-start guide for more details of the software.
- Put on your best duds and stride out boldly into the street. Tell everyone that you are having a lovely day with your new TT24 console and the TT control software.

## TT Control Software Upgrade Instructions

The following instructions will help you upgrade the TT24 firmware file, control software, and any expansion options to the latest versions. Check our website periodically to see if a newer version is available:

<http://www.mackie.com/products/tt24/software.html>

You will first need to upgrade the TT Control PC application.

**WARNING:** This procedure will erase all internal memory on the TT24. If you have venues, presets, or snapshots that you want to save, you *must* use the “Backup Console” utility in the TT Control File menu before upgrading. If you have an LP48 card installed, you will also need to backup the LP48 presets by using the “Backup LP48 Card Presets” item from the Menu > Expansion Card Options drop-down.

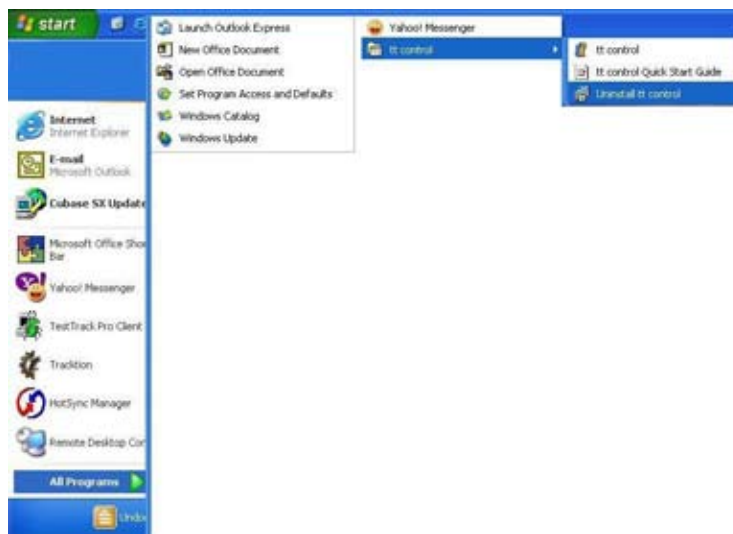
**Note:** This can take a *long* time.

### Procedure

1. Download the latest version of the TT Control setup from the Mackie website: <http://www.mackie.com/products/tt24/software.html>

Note that this installer also includes the latest versions of the firmware files for the TT24, expansion cards, and DS3232 Digital Snake.

2. Uninstall the TT Control application you are currently using. To do this, go to Windows Start\Programs\tt control and run “uninstall”.



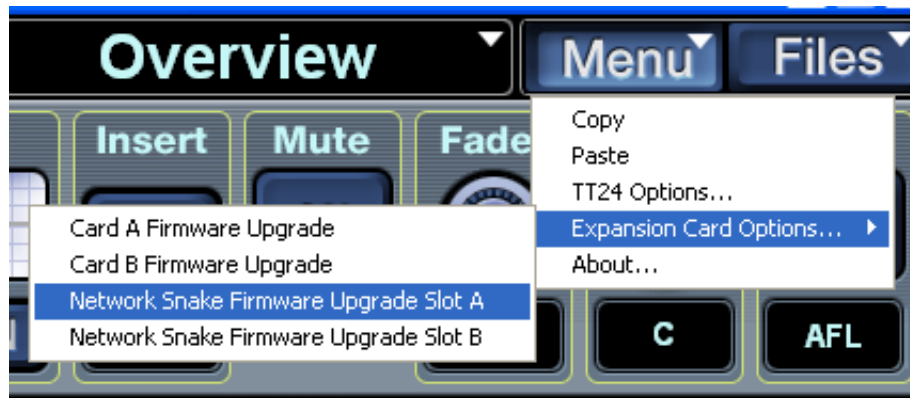
3. Run the setup file you downloaded in step 2 to install the new version of the application. We suggest that you install the TT Control application to its default location.

## DS3232 Digital Snake Firmware Upgrade Instructions

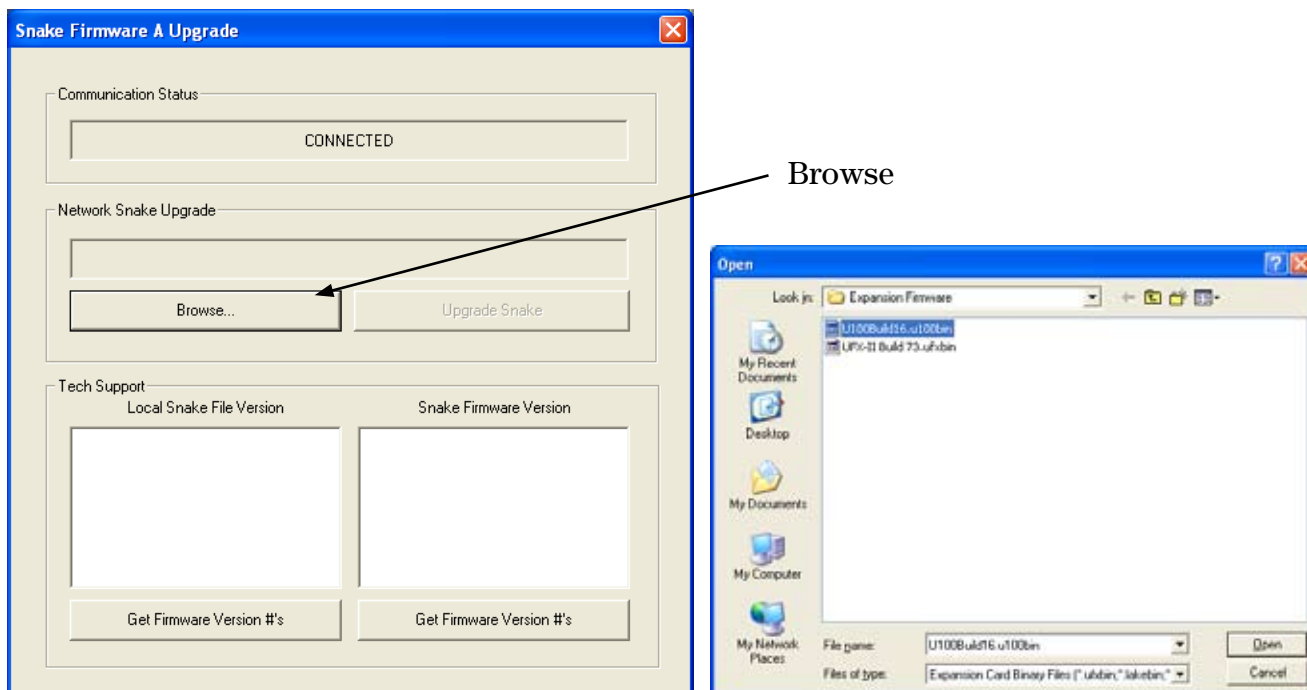
The following instructions will help you upgrade the DS3232 Digital Snake firmware file to the latest version. The DS3232 should be upgraded **BEFORE** upgrading the U100 card to which it is connected. After upgrading the snake and all expansion cards, upgrade the console firmware.

### Procedure

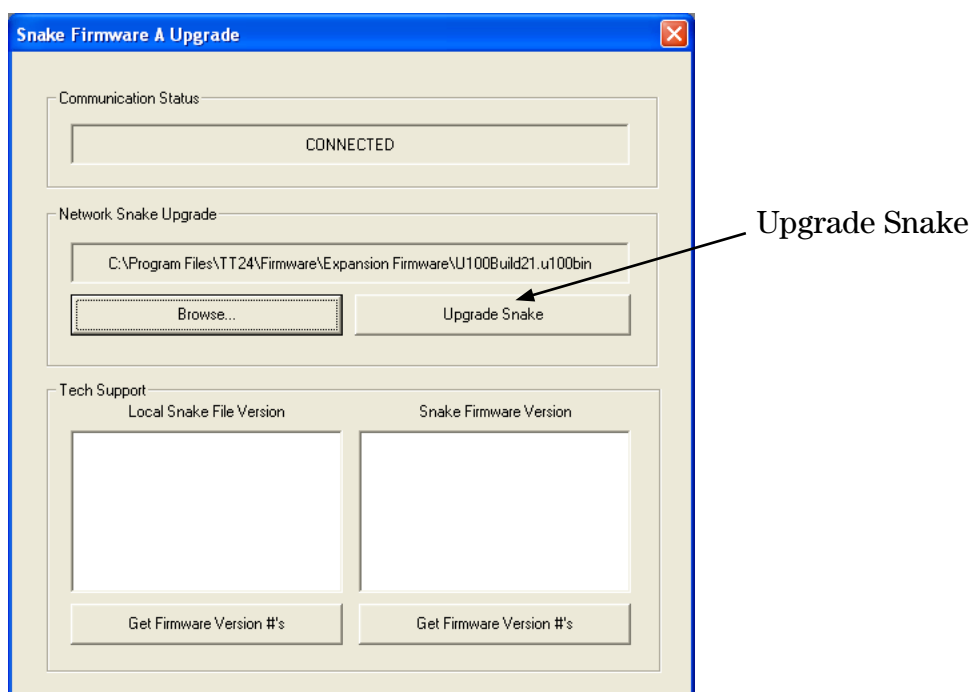
1. Download the latest version of the TT Control software installer and upgrade your TT Control software and console firmware as described in the previous section: <http://www.mackie.com/products/tt24/software.html>
2. With the TT24 turned on and the TT24 connected to the PC via USB, open the TT Control application on your computer and select “Menu” from the upper right of the GUI. From the list, select “Expansion Card Options > Network Snake Firmware Upgrade Slot A/B.” Select Card A or B, whichever card your snake is connected to (Card A is the top slot and Card B is the bottom slot).



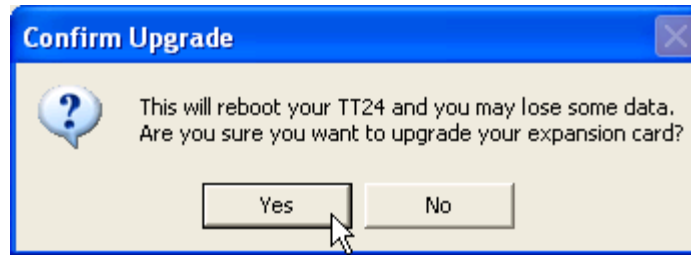
3. Select “Browse.” A file browser will open showing the latest versions of the expansion card firmware files. Select the U100 file for the DS3232 and click “Open.” **Note:** The U100 and the DS3232 use the same firmware file.



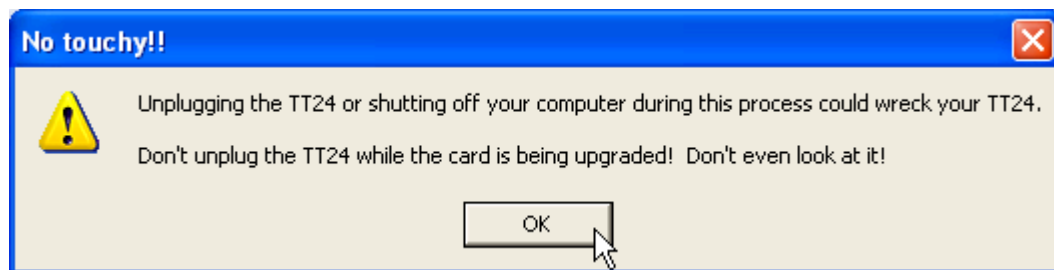
4. Double-check to make sure the filename in the “Network Snake Upgrade” box is correct, and press the “Upgrade Snake” button.



5. A dialog box opens asking you to confirm the upgrade, warning that this procedure will reboot your TT24. Click “Yes” to continue.



6. You will see a warning NOT to touch the TT24 while the card is being upgraded. Click “OK” to continue.



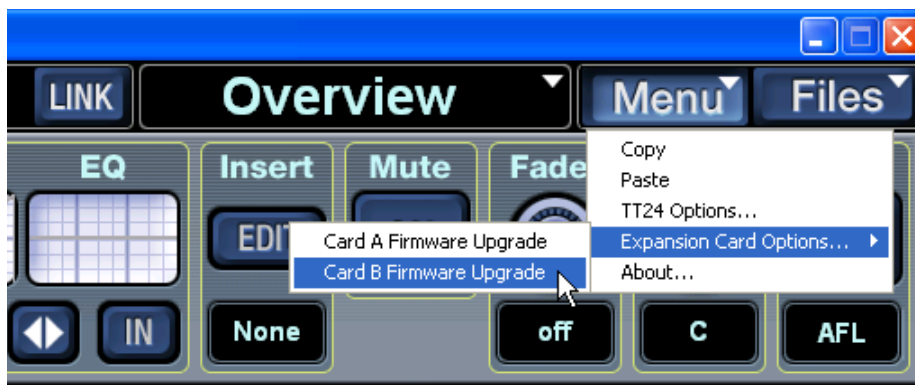
7. The upgrade procedure will continue. You will see a progress meter on the Touchscreen and on the computer display as the snake is upgraded. You should NOT touch the console or the DS3232 until the procedure is done and the TT24 is rebooted.
8. After this procedure is completed and the TT24 and DS3232 reboot, follow the procedure in the next section for the U100 card and any other card installed in the console.

## TT24 Expansion Card Firmware Upgrade Instructions

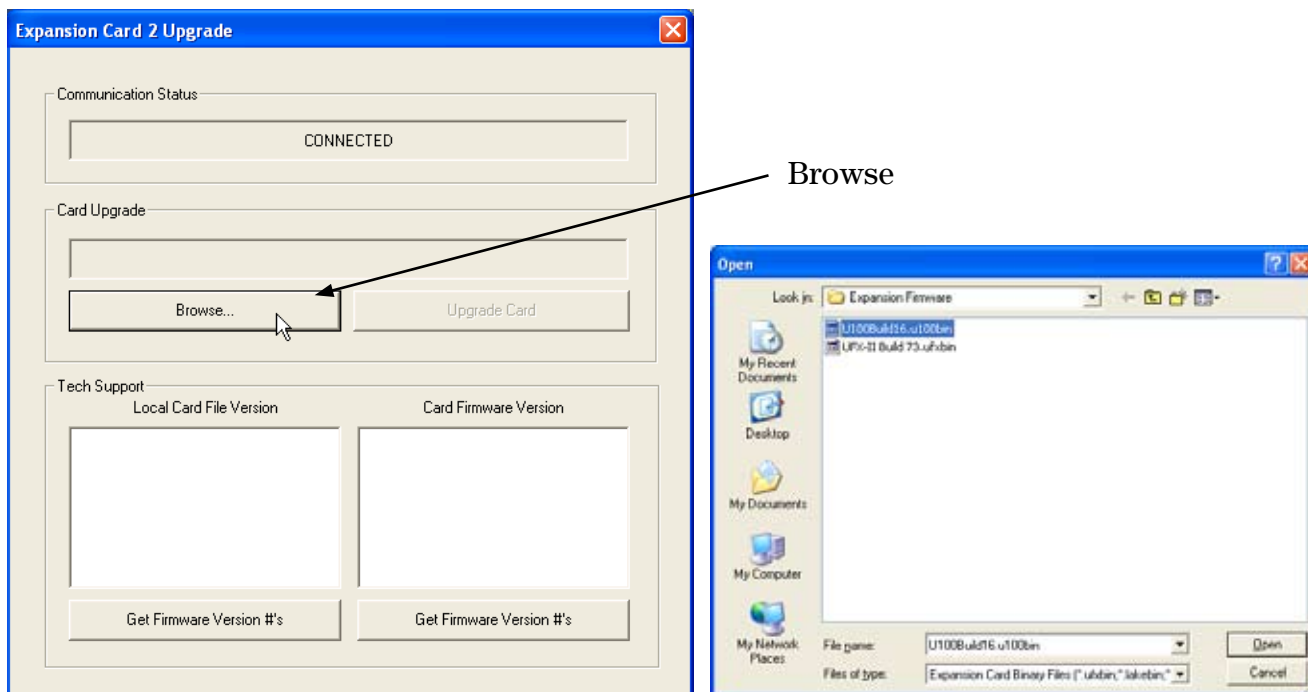
The following instructions will help you upgrade the TT24 Expansion Card firmware file to the latest version. If you are using a DS3232 Digital Snake, you **must** upgrade it before the U100 card to which it is attached as described in the previous section. Upgrade all expansion cards before upgrading the console firmware.

### Procedure

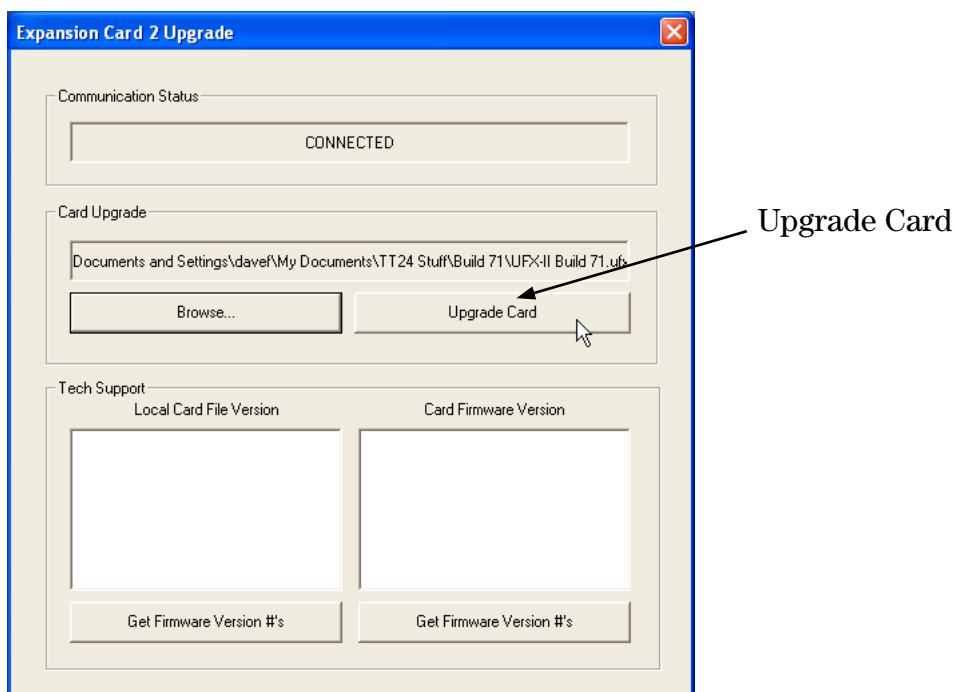
1. Download the latest version of the TT Control software installer and upgrade your TT Control software and console firmware as described in the previous section: <http://www.mackie.com/products/tt24/software.html>
2. With the TT24 turned on and the TT24 connected to the PC via USB, open the TT Control application on your computer and select “Menu” from the upper right of the GUI. From the list, select “Expansion Card Options > Card A/B Firmware Upgrade.” Select Card A or B, whichever card you are upgrading (Card A is the top slot and Card B is the bottom slot).



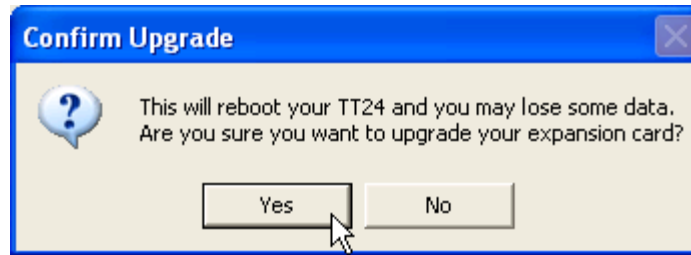
3. Select “Browse.” A file browser will open showing the latest versions of the expansion card firmware files. Select the appropriate file for the card you are upgrading and click “Open.”



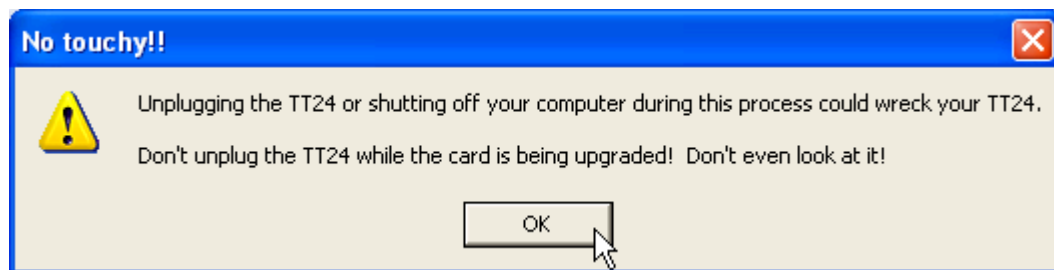
4. Double-check to make sure the filename in the “Card Upgrade” box is correct, and press the “Upgrade Card” button.



5. A dialog box opens asking you to confirm the upgrade, warning that this procedure will reboot your TT24. Click “Yes” to continue.



6. You will see a warning NOT to touch the TT24 while the card is being upgraded. Click “OK” to continue.



7. The upgrade procedure will continue. You will see a progress meter on the Touchscreen and on the computer display as the card is upgraded. You should NOT touch the console until the procedure is done and the TT24 is rebooted.
8. After the procedure is completed and the TT24 reboots, repeat the process for the other card installed in the console, if necessary. Once complete, close the Expansion Card Upgrade window and upgrade the TT24 console as described in the next section.

## TT24 Firmware Upgrade Instructions

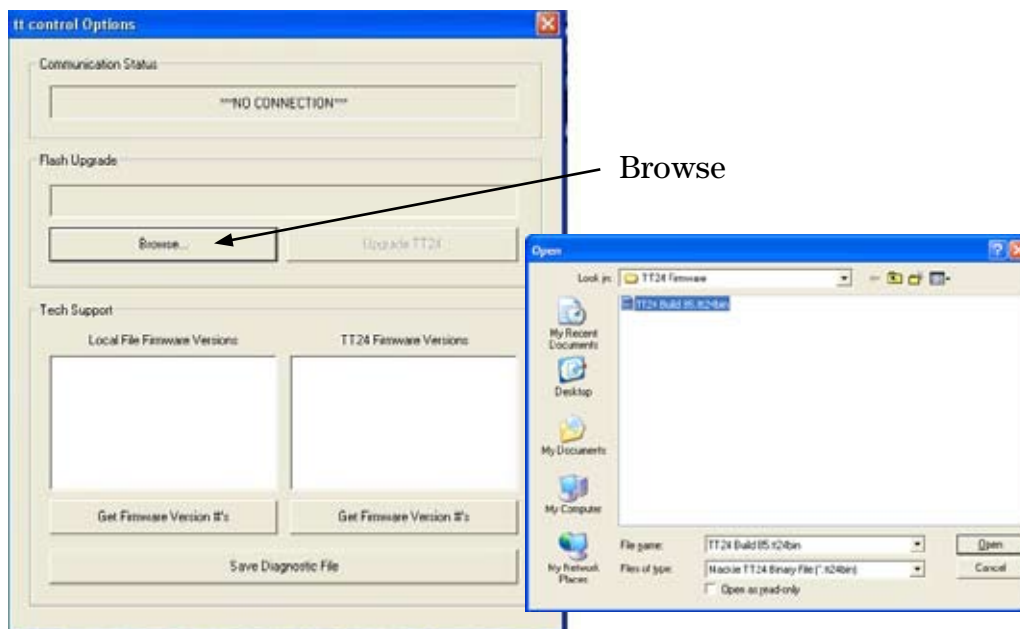
The following instructions will help you upgrade the TT24 firmware to the latest version. The console should be upgraded **AFTER** the DS3232 and any expansion cards you may have.

### Procedure

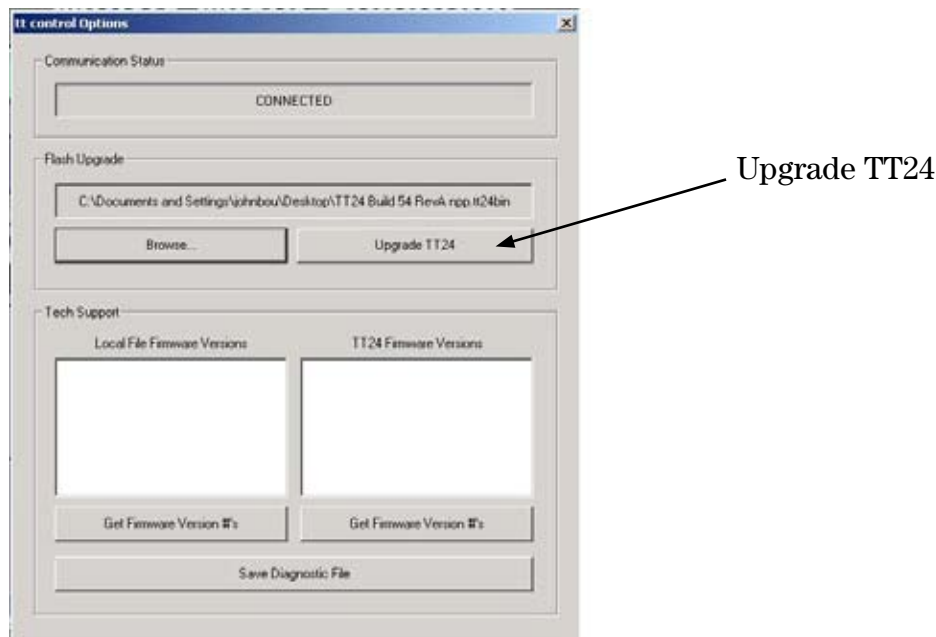
1. Download the latest version of the TT Control software installer and upgrade your TT Control software and console firmware as described in the previous section: <http://www.mackie.com/products/tt24/software.html>
2. With the TT24 turned on and the TT24 connected to the PC via USB, open the TT Control application on your computer and select “Menu” from the upper right of the GUI. From the list, select “TT24 Options.”



3. Select “Browse.” A file browser will open showing the latest version of TT24 firmware. It has an extension of .tt24bin. Select it and click “Open.”



4. As stated above, this process will erase your console’s memory, so backup any necessary data first. Verify the file path in the “Flash Upgrade” box is correct and press the “Upgrade TT24” button. You will see a warning NOT to touch the TT24 while it is being flashed (or not to flash the TT while it is being updated). You will see a progress meter on the LCD, and you should NOT touch the console until it is done.



5. Once the flash is complete, the LCD will need to be calibrated. It displays the calibration targets, and you must touch the center of each target.

6. Now you must convert and restore any files you may have backed up. Use the “Translate Files” command from the Files menu to convert your backups to the new version. Then use the “Restore Items” to load the translated files back into the console. Finally, if you have an LP48 card, you must restore the LP48 snapshots from the Menu > Expansion Card Options drop-down.
  
7. Now you are ready to go with your upgraded TT24.