

**MACKIE.®**

# **TRACKTION 2**

**MUSIC PRODUCTION SOFTWARE**



**USER'S GUIDE ADDENDUM  
VERSION 2.1**

# Table of Contents

<b>Tracktion 2.1 New Features</b>	<b>3</b>
1. Custom Control Surface Creation	3
2. MP3 Import and MP3/Ogg Export	5
3. MIDI Loop Recording	7
4. Support for Frontier Design Group Tranzport	7
5. Filter Icon “Quick Control Parameter”	8
6. File Import Improvements	9
7. MIDI Bank Select Messages	10
8. Advanced Program and Bank Naming	12
9. Filter Selection Menu Behaviours	16
10. Solo Isolate	17
11. Level Control on the Aux Send Filter Icon	18
12. Global Setting for Soloing Behaviour	19
13. Improved Organization of Settings Tab	19
14. Hide Control Section at Bottom Area of Edit Tab	20
15. Filter GUI Locked Default	21
16. MIDI Channel and MIDI Volume Changed for Multiple Clips	21
17. Added Support for FLAC, CAF, AU, VOC to export/import	21

Don't forget to visit our website at [www.mackie.com](http://www.mackie.com) for more information about this and other Mackie products.



# Tracktion 2.1 New Features

This addendum to the Tracktion 2 User's Guide highlights the new features included with the version 2.1 software upgrade.

## 1. Custom Control Surface Creation

Tracktion now supports the creation of Custom Control Surfaces for control of the transport, navigation, options, and channels. You can now control many aspects of Tracktion's operation with your favorite low-cost hardware controller, or even the sliders, buttons, and keys on your MIDI controller keyboard. These custom controllers support 1, 4, and 8 channel bank changes so a controller can easily be set to control track parameters for all tracks.

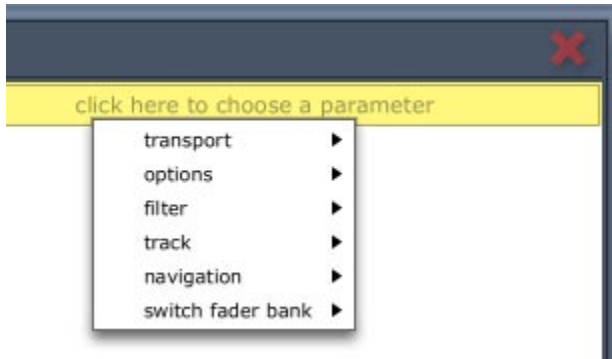
To create a Custom Control Surface, click the “add custom control surface...” button from the control surface settings tab, type a name, and click “ok”.



Then, with the new Custom Control Surface selected, set the midi input port in the properties panel and click the “edit control mapping” button to create the custom mapping. You can click the “hide midi input device” button to hide the associated midi input icon on the edit screen. Finally, these Custom Control Surfaces can be exported and shared with others using of the same controller.



The MIDI control mappings edit panel allows you to choose parameters to map to MIDI controllers and MIDI notes. Select a parameter to map by clicking on the right column and choosing an item from the popup menu. Global commands such as the transport and the master options can be mapped to MIDI Notes.



You can also create a custom control surface to control channel parameters. To do this, choose a parameter in the “track” parameter menu for up to 8 tracks. Then from the “switch fader banks” parameter menu, map the “left” and “right” parameters.

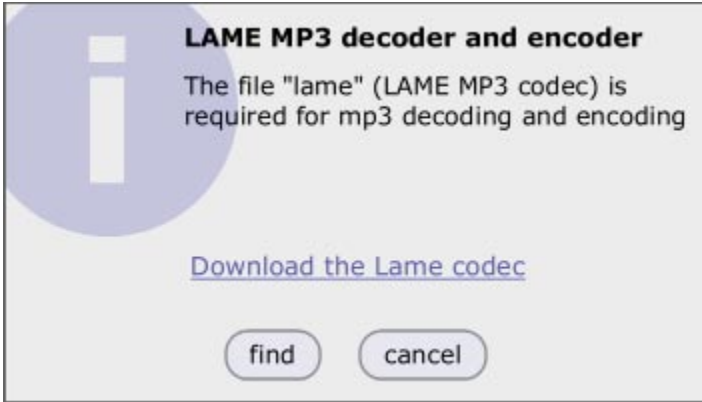
For example, you can control four tracks at a time by mapping volume for tracks 1-4 and the “left 4” and “right 4” parameters to allow selection of any 4 tracks, shifting 4 at a time. This setup is illustrated below:

controller # 12 (Effect Control 1 (coarse)) [1]	volume track #1
controller # 13 (Effect Control 2 (coarse)) [1]	volume track #2
controller #91 (Reverb Level) [1]	volume track #3
controller #93 (Chorus Level) [1]	volume track #4
note on G#5 [1]	left 4
note on A#5 [1]	right 4
click here to choose a controller	click here to choose a parameter

See Appendix B for a list of all Master Controllers that can be mapped.

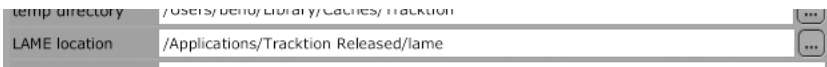
## 2. MP3 Import and MP3/Ogg Export

MP3 files can now be imported using drag and drop or the import audio file dialog using the LAME codec. This codec handles the MP3 conversions. The first time you try to import or export an MP3, you will be prompted to find the LAME codec on your computer.



Click the “Download the Lame codec” link to open a web browser and download the LAME codec for the computer. Tracktion can use the Lame file from anywhere on your computer although other applications may require it to be in a certain location.

Once the file is on your computer, click the “find” button to open a file dialog and navigate to the location of the codec. Alternately, you can set the location of the Lame codec from the “LAME location” file chooser found in the file settings settings tab.



Similarly, both MP3 and Ogg files can be exported by using the new Export>Create an MP3/OGG file... menu item.



This resulting dialog allows the user to choose a file format (OGG or MP3), select a mode (variable, average, or constant bitrate), and choose a bitrate value as described in the table below.



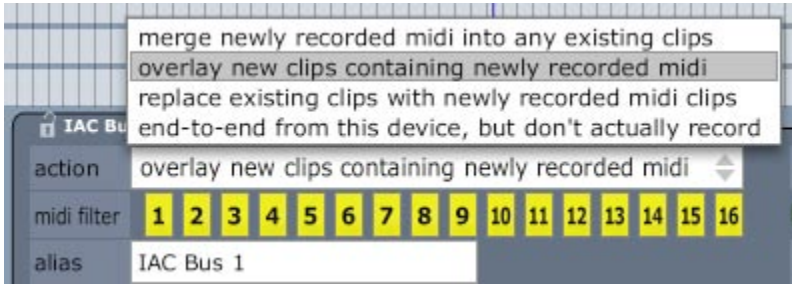
Format	Mode	Bitrate
ogg	average bitrate	bitrate: 32, 40, 48, 56, 64, 80, 96, 112, 128, 160, 192, 224, 256, 320
	variable bitrate	quality: 1-10
mp3	average bitrate	bitrate: 32, 40, 48, 56, 64, 80, 96, 112, 128, 160, 192, 224, 256, 320
	constant bitrate	bitrate: 32, 40, 48, 56, 64, 80, 96, 112, 128, 160, 192, 224, 256, 320
	variable bitrate	quality: 1-10

It also allows the creation of ID3 tabs for the exported files so when you add your newly created mp3s to a program like iTunes or Windows Media Player, they will appear with all the relevant information, just like your commercial audio files.



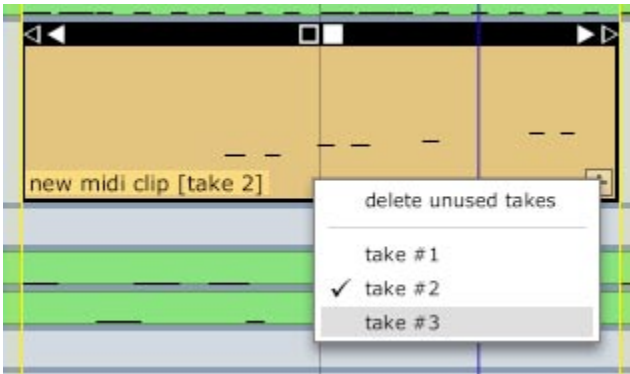
### 3. MIDI Loop Recording

You can now create MIDI loop clips during loop record that function the same as audio loop clips by choosing “overlay new clips containing newly recorded MIDI” as the midi input action setting.



The “merge newly recorded midi into any existing clips” action will still merge looped midi into one take, while the “replace existing clips with newly recorded midi clips” action will only keep the last take during loop record.

MIDI loop clip takes can be selected from the takes pop-up list accessed by clicking the plus sign on the clip.

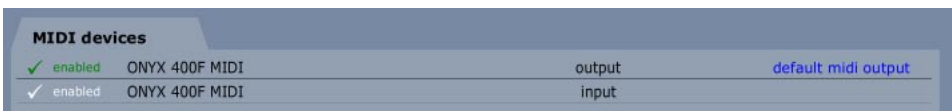


Choosing “delete unused takes” from the takes pop-up list will remove all unused takes leaving only the active take. This effectively converts the MIDI loop clip into a standard loop clip for the selected take.

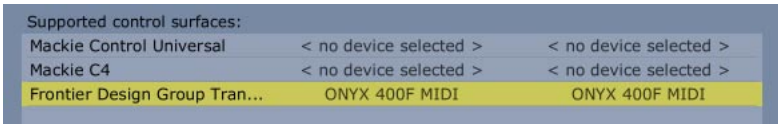
### 4. Support for Frontier Design Group Tranzport

Tracktion 2.1 can be controlled with the Frontier Design Group Tranzport wireless controller.

Enable the MIDI input and output pair connected to the Tranzport Hardware in the MIDI Settings Tab.



Select “Frontier Design Group Tranzport” in the External Controllers Settings Tab.



With the Tranzport control surface selected, set the corresponding MIDI Input and Output ports in the Properties panel.



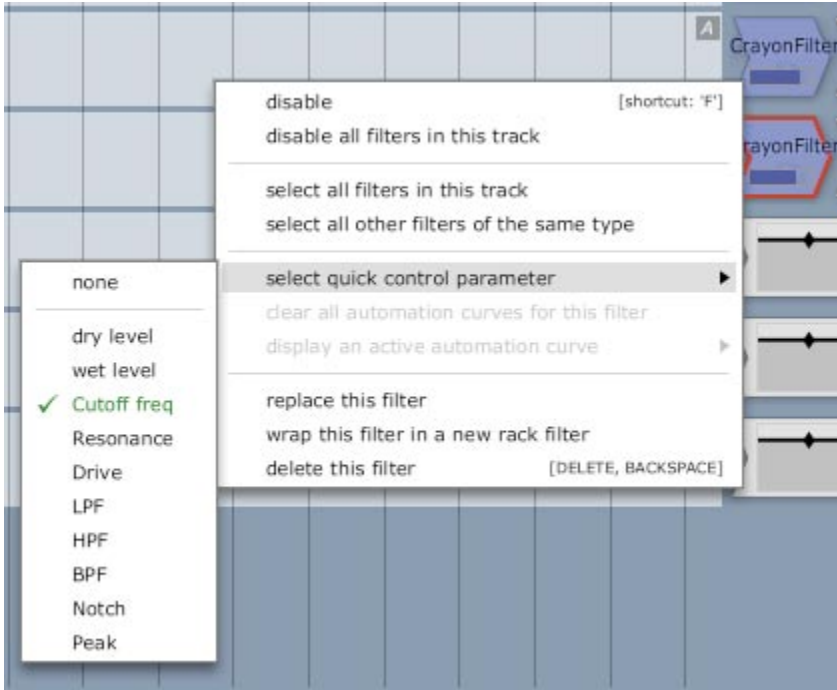
See Appendix A for a list of Tranzport controls and their associated Functions.

## 5. Filter Icon “Quick Control Parameter”

All filter icons can display any automatable parameter as a small horizontal slider on the filter icon for quick adjustments. This is called the Quick Control Parameter. This can be used, for example, to quickly adjust the decay time on a reverb plug-in, without having to open the plug-in GUI.



To set the Quick Control Parameter for a filter icon, simply right click the filter and choose “select quick control parameter” from the context menu. A pop up menu will appear allowing selection of any Automatable parameter. This parameter can then be adjusted from the filter icon directly.



## 6. File Import Improvements

Importing multiple files into an edit from the import files dialog or via drag and drop has been greatly improved.

You can now select multiple files from the edit import file dialog. When importing via this dialog, drag and drop, or from a CD on the PC, you are presented with a dialog allowing you to choose how the files will be placed into the edit.

For a single file containing a BWAV timestamp (file header information indicating at what time the file was originally recorded), you are prompted whether to place the file at the BWAV timestamp position or at the cursor position.



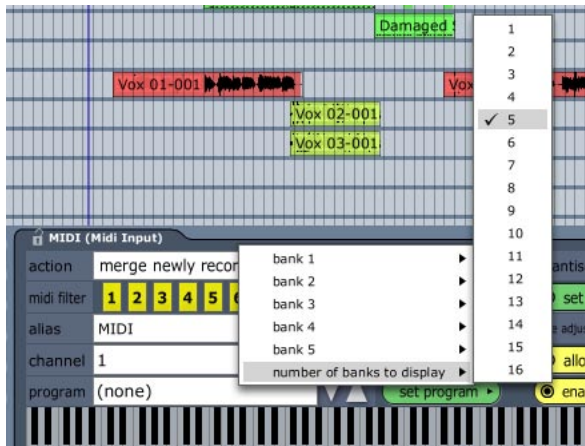
For multiple files, you can choose whether to place them all on the same track or onto separate tracks. You can also choose to use a BWA time stamp, if present, to place the files, or to ignore the time stamp and place them at the edit cursor position instead.



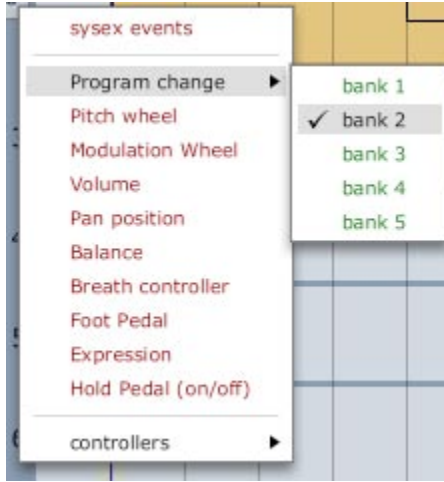
## 7. MIDI Bank Select Messages

You can now select programs on multiple banks using the MIDI input properties. This is useful for external MIDI sound modules with multiple banks of programs.

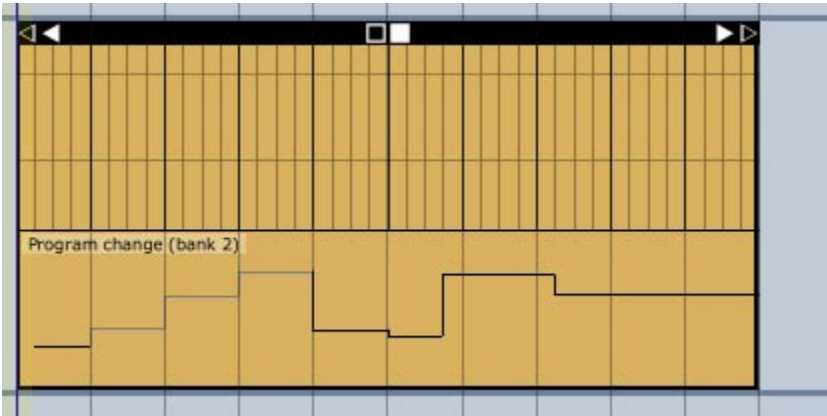
The MIDI input programs list lets you select the number of banks you wish to display, and submenus for each bank allow you select programs from any bank, sending the bank change and program change at once.



Program changes on a MIDI clip are now editable for each bank. The user chooses which bank of program changes to display and edit.



The Active bank is displayed in black while all other banks are displayed in gray.

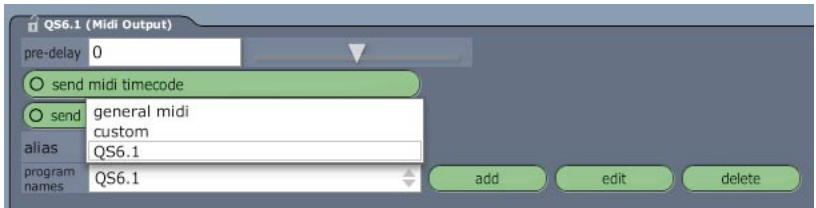


# 8. Advanced Program and Bank Naming

MIDI program and bank names can be customized to create sets of names for use with each piece of hardware in the studio. These names can be exported and shared with others.

To create a program names set, go to the MIDI settings tab, select a MIDI output, and choose “add” next to the program names drop-down in the properties section.

You can choose a preset from the list of program names or choose to make your own.



Now click “edit” to rename up to 16 banks with custom bank and program names.



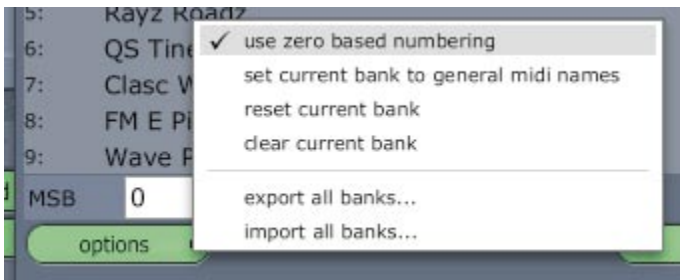
To name a bank, select the bank from the “bank name” list, click “rename”, and enter the new name.



Rename programs by double-clicking a program name and typing in a new one. Press Tab to select the next program for renaming.



From the options menu, you can choose to “use zero based numbering.” This is useful if the synth numbers programs from 0-127 instead of 1-128. In addition, the user can “set the current bank to general midi names,” “reset the current bank” to names “patch 1” to “patch 128,” and “clear the current bank” to use only program numbers for selecting patches for that bank. The options menu also lets you export and import all custom bank names for sharing with other users. Note that, in addition to importing Tracktion’s native program name format, you can also import standard Midnam files.



The bottom of the Custom Program Names edit screen allows advanced users to customize the MSB (most significant byte) and LSB (least significant byte) for each bank. In most cases, you will not have to adjust these settings, but some sound modules may require this level of customization.



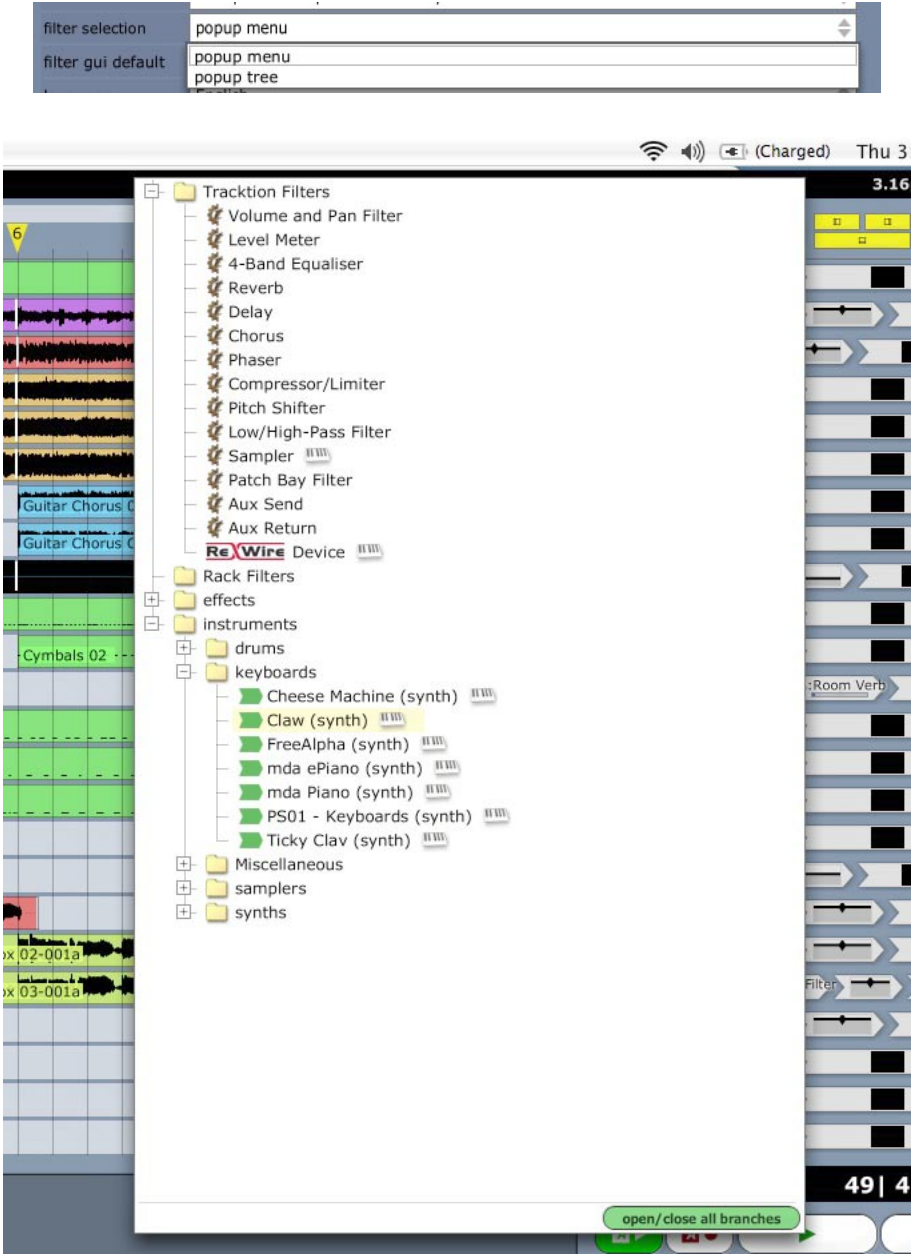
Repeat this naming process for every MIDI output connected to a hardware unit.

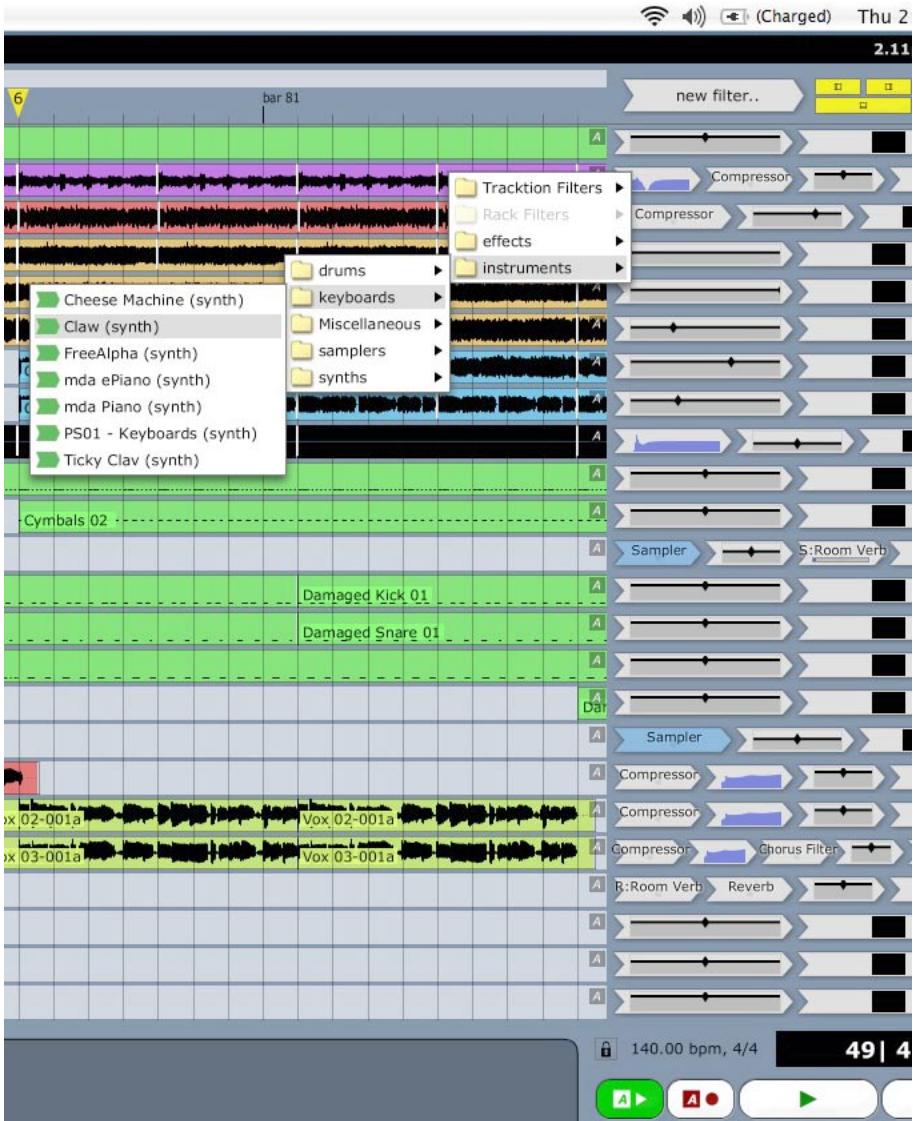
Now, when assigning a MIDI input to record onto a track routed to one of these MIDI outputs, you can select MIDI programs using the custom names they have created.

# 9. Filter Selection Menu Behaviours

The behaviour of the filter selection menu (accessed by dragging the filter icon to a track) can now be changed from the popup tree to a popup menu allowing faster selection of deeply nested items.

This operation can be changed by selecting either “popup menu” or “popup tree” for the “filter selection” setting in the user interface settings tab.



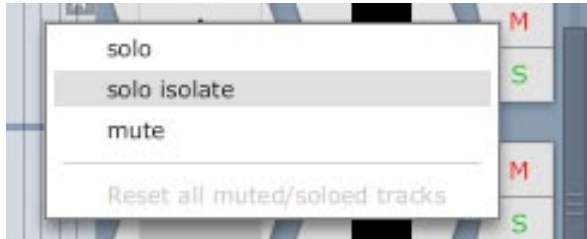


## 10. Solo Isolate

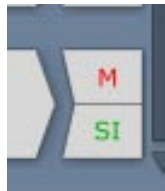
A track that is “solo isolated” always sends its audio or MIDI to its assigned output and is not automatically muted when other tracks in the session are soloed.

The most common use of solo isolate is to isolate the tracks containing aux returns followed by effects filters, such as reverbs or delays. That way, when you solo a source track that is feeding the effect via an aux send, the tracks containing the solo isolated aux returns will still be heard, and will not be muted.

To solo isolate a track, click the solo isolate button from the track properties, or right click on a solo and choose “solo isolate”.



The solo “S” will change to an “SI” to indicate the track has been solo isolated.



Soloing any other track will cause the solo buttons on solo isolated tracks to flash indicating that the track is still passing audio even though it has not been directly soloed.

## 11. Level Control on the Aux Send Filter Icon

Aux Send Filter Icons now display a small horizontal level control allowing adjustment of the aux send level.



## 12. Global Setting for Soloing Behaviour

A new setting for solo behaviour allows you to decide whether you want to have exclusive soloing or cumulative soloing. This can be changed by choosing “exclusive solo” or “cumulative solo” for the “solo behaviour” setting in the user interface settings tab.

Cumulative solo (the new default) allows you to solo more than one track at once, which mimics how a hardware mixer functions.



Exclusive solo allows you to only have one track soloed at a time. This is useful for focusing on only a single track at once.

In either mode, control clicking a solo on the PC or command clicking on the Mac gives you quick access to the alternate solo method.

## 13. Improved Organization of Settings Tab

The settings tab has been completely reorganized making it easier to find the settings you need including Audio, MIDI, User Interface, Plug-ins, File Settings, Key-Mappings, and Control Surfaces.



*Audio:* Contains settings related to any attached audio interfaces.

*MIDI:* Contains settings related to any attached MIDI interfaces.

*User Interface:* Contains settings related to how the program is displayed and how the user interacts with various aspects of the GUI.

*Plug-ins:* Contains settings related to Tracktion's installed plug-ins (filters)

*File Settings:* Contains settings related to Tracktion's file housekeeping, etc.

*Key-Mappings:* Contains settings related to Tracktion key mappings

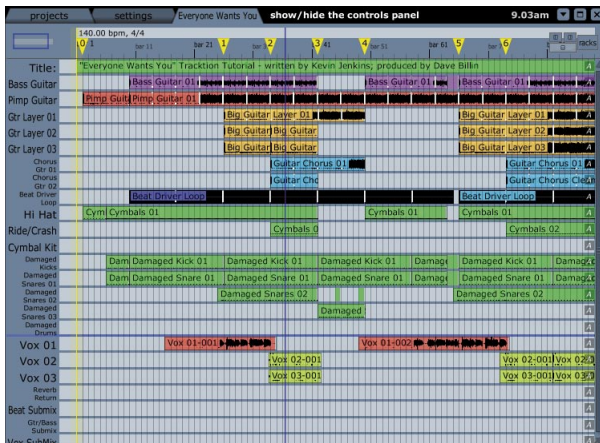
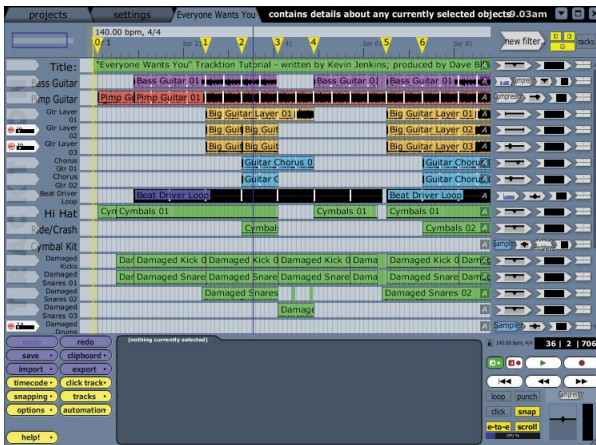
*Control Surfaces:* Contains settings related to Tracktion's pre-configured and user created external control surfaces.

## 14. Hide Control Section at Bottom Area of Edit Tab

The Control Section at the bottom area of the Tracktion Edit tab can now be hidden allowing a larger view of the tracks, inputs, and filters. This is done via the corresponding hide button in the top right of the screen or from an assignable key command.



In addition, a new customizable key command allows you to hide or show the inputs, filters, and controls areas at once allowing quick access to a full screen track editing view.



## 15. Filter GUI Locked Default

Filter GUIs can now be locked by default. This can be done by choosing “unlocked” or “locked” for the “filter gui default” setting in the user interface settings tab.

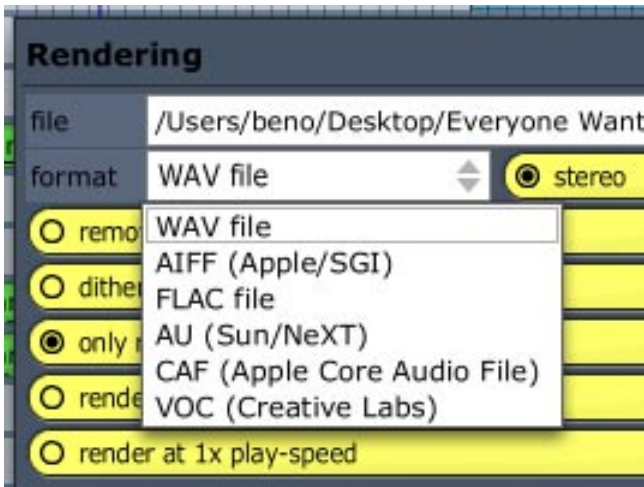


## 16. MIDI Channel and MIDI Volume Changed for Multiple Clips

MIDI Channel and MIDI Volume can now be changed for multiple clips at once. Simply select more than one MIDI clip and change the MIDI Volume or Channel from the properties panel. This allows you to change MIDI channels for groups of clips at once; this may be used to change the program on a multi-timbral synth that is being played.

## 17. Added Support for FLAC, CAF, AU, VOC to export/import

You can now import and export files of type FLAC, CAF, AU, and VOC. These are accessible from the standard export and render dialogs as new file types.



# Appendix A: Tranzport Button-Function Mapping

Button	Function	Shifted Function
REW	Rewind	Go to start
FFWD	Fast Forward	Go to end
STOP	Stop	Toggle E-to-E
PLAY	Play	Toggle automation read
RECORD	Record	Toggle automation write
<TRACK	Previous Track	Save
TRACK>	Next Track	Toggle Snap
REC	Arm Track	Arm/Unarm all Tracks
MUTE	Mute Track	Clear all mutes
SOLO	Solo Track	Clear all solos
IN	Go to In	Set In
OUT	Go to Out	Set Out
PUNCH	Toggle Punch	Toggle click
LOOP	Toggle Loop	Toggle Level/Pan
PREV	Previous Marker	Zoom In
ADD	Add Marker	Zoom to Fit
NEXT	Next Marker	Zoom Out
UNDO	Undo	Redo
DATAWHEEL	Scroll	Level/Pan
FOOTSWITCH	Record	

# Appendix B: Custom Control Surface Mapping Parameters

Group	Command	Sub Command	Detail
Transport	play		
	stop		
	record		
	home		
	end		
	rewind		
	fast forward		
	mark in		
	mark out		
	automation read		
	automation record		
	add marker		
	next marker		
	previous marker		
	nudge left		
	nudge right		
	abort		
	abort and restart		
	jog		moves transport forward for CCs 1-64 and backwards for CCs 65-127
	jump to the mark in point		
jump to the mark out point			
options	toggle beats seconds mode		
	toggle loop		
	toggle punch		
	toggle click		
	toggle snap		
	toggle slave		
	toggle e-to-e		
toggle scroll			

Group	Command	Sub Command	Detail	
filter	master volume			
	master pan			
	quick control parameter		quick control parameter for the selected filter	
	automatiable parameters	parameter 1-16	first 16 parameters for the selected filter	
track	volume	track 1-8	adjusts right most volume/pan filter	
	pan	track 1-8	adjusts right most volume/pan filter	
	mute	track 1-8		
	solo	track 1-8		
	arm	track 1-8		
	select	track 1-8		
	aux	track 1-8	adjusts right most aux send filter	
	navigation	zoom in		
		zoom out		
scroll tracks up				
scroll tracks down				
scroll tracks left				
scroll tracks right				
zoom tracks in				
zoom tracks out				
		toggle selection mode		<p>Changes the select mode between selecting “filters only” and “anything.”</p> <p>In filters only mode, your control can only move the selection around the filters area. If the selection is out side of the filters, the selection will jump to the filters.</p> <p>In anything mode, the selection can be moved all over selecting filters, clips, and tracks.</p>
	select left			
	select right			
	select up			
	select down			
	select clip in track	track 1-8	selects first clip in the track	
	select filter in track	track 1-8	selects first filter in the track	

<b>Group</b>	<b>Command</b>	<b>Sub Command</b>	<b>Detail</b>
switch fader bank	left 1		shifts tracks under control to left by 1
	left 4		shifts tracks under control to left by 4
	left 8		shifts tracks under control to left by 8
	right 1		shifts tracks under control to right by 1
	right 4		shifts tracks under control to right by 4
	right 8		shifts tracks under control to right by 8

# **TRACKTION 2**

**MUSIC PRODUCTION SOFTWARE**



# **TRACKTION 2**

**MUSIC PRODUCTION SOFTWARE**



# **MACKIE®**

---

**16220 Wood-Red Road NE • Woodinville, WA 98072 • USA**

**United States and Canada: 800.898.3211**

**Europe, Asia, Central and South America: 425.487.4333**

**Middle East and Africa: 31.20.654.4000**

**Fax: 425.487.4337 • [www.mackie.com](http://www.mackie.com)**

**E-mail: [sales@mackie.com](mailto:sales@mackie.com)**